

TSDS Upgrade Project

Texas Education Agency

2023-2024 Parallel Submission Update

April 18, 2024

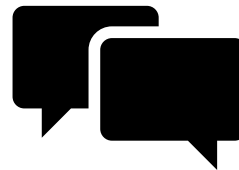
HOUSEKEEPING



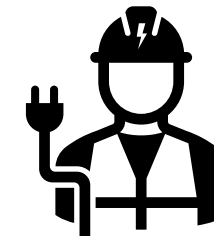
WEBINAR RECORDING



HANDOUT SECTION



CHAT PANEL



TECHNICAL ISSUES

WHAT TO KNOW...





Terri Hanson

Associate Commissioner
Customer Relationship Management
and Data Standards Department



Leanne Simons

Senior Director
Data Standards, Data Quality
and Business Analysis Division



Scott Johnson

Director
Customer Relationship
Division

AGENDA

PROJECT UPDATES

Parallel Submission Expectations, Status, and Challenges

SUPPORTING TEAMS

Data Standards, Training, Support, and Data Verification

CLOSEOUT

Next Steps, Reminders, and Resources



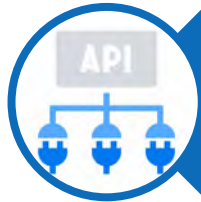


PROJECT UPDATES

PARALLEL SUBMISSION APPROACH

EXPECTATIONS:

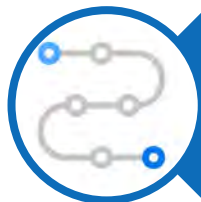
- All TSDS vendors are required to test solutions with their LEA partners.
- TEA will release new functionality throughout the Parallel Submission.
- ESCs will support participating LEAs in ensuring vendor readiness.



Integration



Data Out



End-to-End



PARALLEL SUBMISSION TIMELINE



SEPTEMBER 2023

DMC Configuration
Data Publication
Resolve L1 & L1.5

OCTOBER 2023

Class Roster Fall
Charter School Waitlist

JANUARY 2024

ECDS KG
PEIMS Mid-Year
PEIMS Fall (resub)

MARCH 2024

Class Roster Winter

JUNE 2024

PEIMS Summer
ECDS PK
SELA

KICKOFF

SUBMISSION-BASED WEBINARS & RESOURCES

PARALLEL START

INITIAL TESTING

CHECKPOINT

ADVANCED TESTING

PARALLEL END

TSDS COMPATIBLE DESIGNATION

BEST PRACTICES

AUGUST 2023

ESC Training
LEA Acceptance
Vendor Integration

DECEMBER 2023

PEIMS Fall
RF Tracker

FEBRUARY 2024

SPPI-14
PEIMS Mid-Year (resub)

MAY 2024

Advanced DMC Functions
Training & Support Feedback

JULY 2024

Child Find
RF Tracker
PEIMS Summer (resub)

AUGUST 2024

PEIMS Extended Year



Onboarding

The successful integration of a vendor product with an LEA that allows connection to the IODS and provides the initial publication of data.

**TSDS
Training**

**DMC
Access**

**Key
Secret**

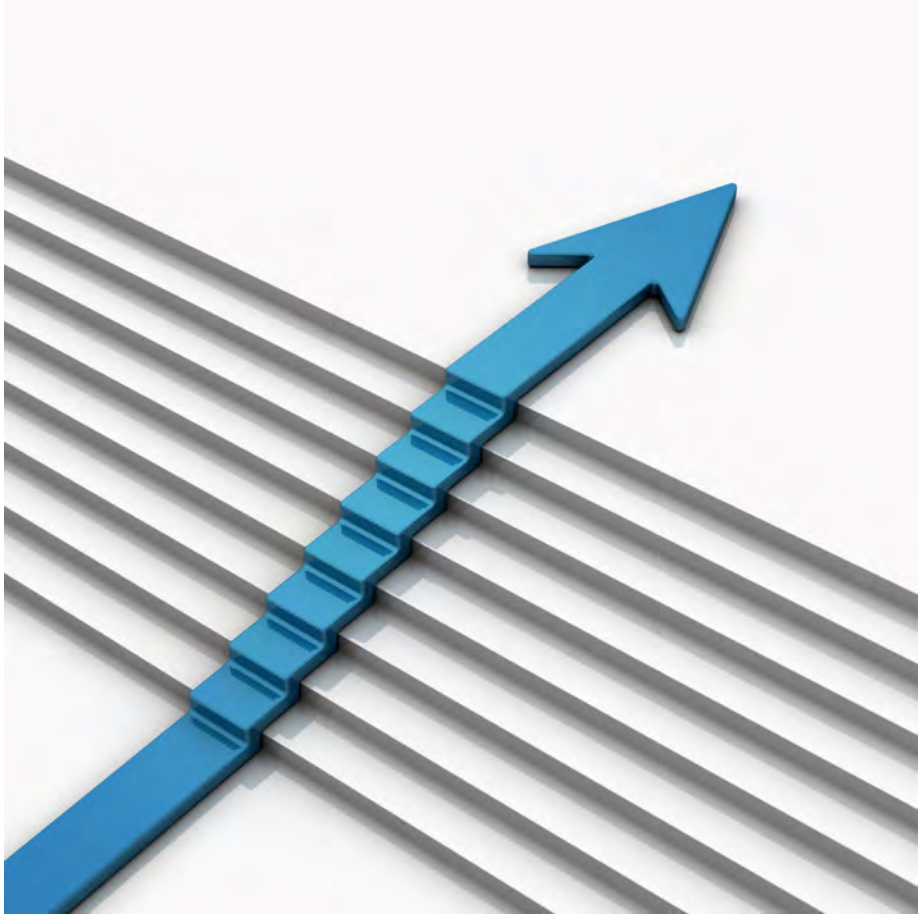
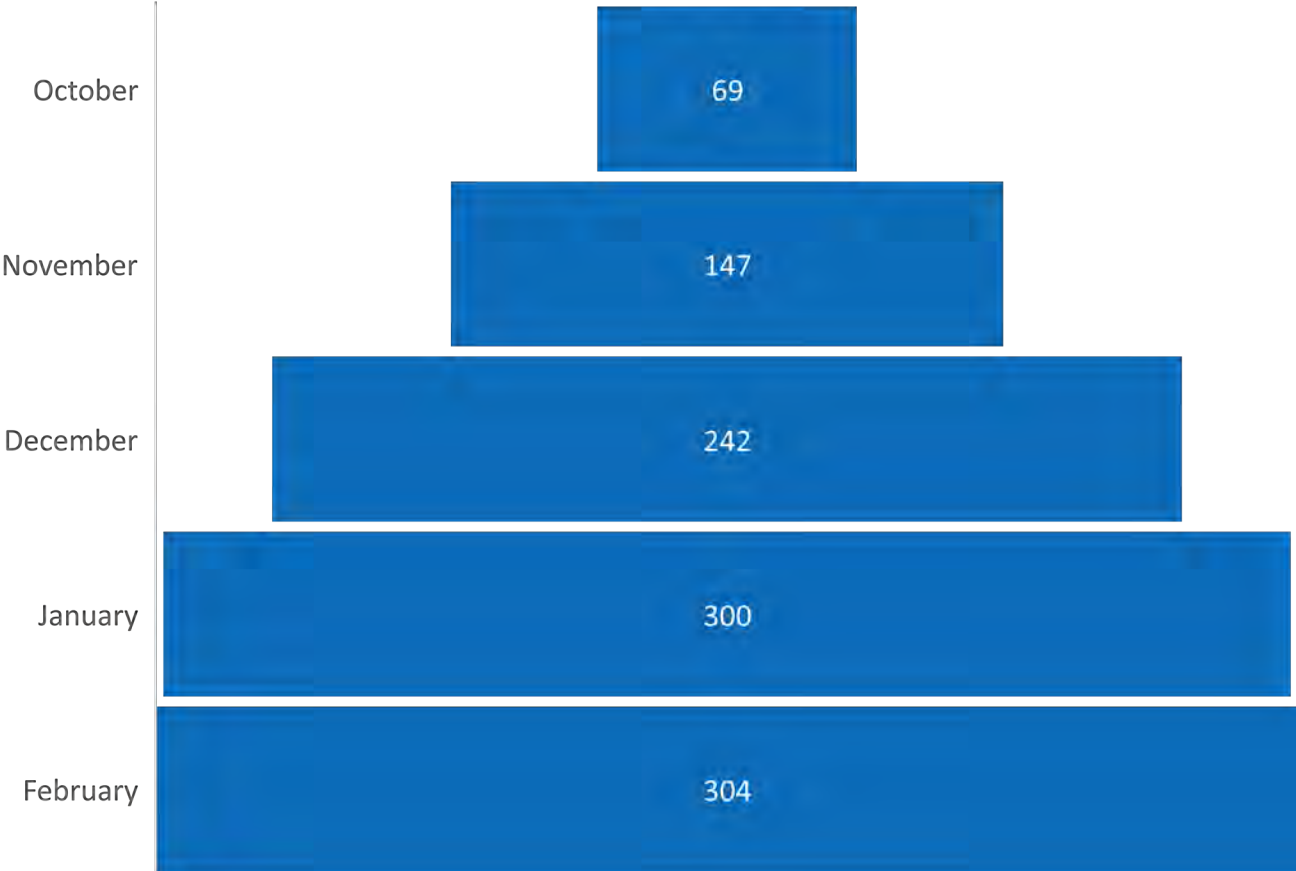
**Product
Setup**

**Data
Load**

INCREMENTAL PROGRESS



Total Number of LEAs



STATUS OF ONBOARDING

312

LEAs Loaded
to IODS

96%

Number of
Parallel LEAs



AS OF: April 15, 2024
Total of 324 LEAs

ONBOARDING CHALLENGES

The shift from **Ed-Fi v3.2.c** data standards used for Pilot to **Ed-Fi v4.0** used in Parallel Submission.



The release of TEDS changes and **SDK updates** after the start of the Parallel Submission.



The vendor integration with various **product hosting** implementations (local, cloud, ESC).



The LEA onboarding coordination with two **different vendor products** (SIS & HR/Finance).



Integration

Data Out

The continuous publication of data to the IODS to allow confirmation of data completeness in the TSDS PEIMS and CORE applications.

**Publish
Data**

**Confirm
DMC**

**Resolve
Errors**

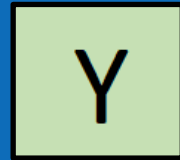
**Promote
Data**

**Verify
Counts**

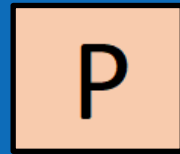
VENDOR PRODUCT SCORECARD



ERP (HR/Finance) VENDOR PRODUCTS											
Vendor	Domain	Finance						Staff			
	Entity	ActualExt	BudgetExt	ContractedInstructionalStaffFTEExt	LocalEducationAgency	PayrollExt	SharedServiceArrangementExt	Staff	StaffEducationOrganizationAssignmentAssociation	StaffEducationOrganizationEmploymentAssociation	StaffSchoolAssociation
Vendor 1	Product A	P	Y	N	Y	Y	N	Y	Y	Y	Y
Vendor 2	Product A	Y	Y	N	Y	Y	N	P	N	P	N
Vendor 3	Product A	P	P	N	Y	N	N	Y	Y	P	Y
	Product B	P	P	N	Y	P	N	P	Y	P	N
Vendor 4	Product A	Y	Y	N	Y	Y	N	Y	Y	Y	Y
Vendor 5	Product A	Y	Y	N	Y	Y	N	P	P	Y	Y
Vendor 6	Product A	P	Y	Y	Y	Y	Y	P	Y	Y	Y
	Product B	P	Y	N	Y	Y	N	P	Y	Y	N
Vendor 7	Product A	P	P	N	Y	Y	N	P	Y	Y	Y



All Data Elements in Entity have been published for at least one LEA by vendor product.



One or more Data Elements in Entity have been published for at least one LEA by vendor product.



No Data Elements in Entity have been published for at least one LEA by vendor product.

COMING SOON TO TSDS WEBSITE



DATA OUT CHALLENGES



The commitment of participating LEAs to complete the necessary setup to publish data.



The interpretation, understanding, and timely resolution of Level 1 (API) errors.



The lack of training opportunities and support for LEAs to resolve Level 1 and Level 1.5 issues.



The lack of IODS transparency and reporting within the DMC application to confirm data.



End-to-End

The continuous testing and comparison of TSDS data submissions by an LEA and ESC to ensure data completeness and accuracy.

**Utilize
Resources**

**Run
Validations**

**Review
Reports**

**Compare
XML**

**Submit
Issues**

STATUS OF END-TO-END



10

Charter School
Waitlist

87

ECDS
Kindergarten

67

SPPI-14

229

PEIMS
Fall

Promotions

104

Class Roster
Winter

120

PEIMS
Mid-year

22

SELA

AS OF APRIL 15, 2024

END-TO-END CHALLENGES



The ability and timing for vendors to onboard their participating LEAs prior to submission due dates.



The resolution of Level 1 (API) and Level 1.5 filters for data promotion and comparison testing.

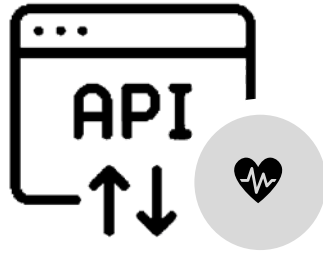


The availability of resources and guidance to effectively compare XML and API data.



The availability of staff and time during peak times of XML data submissions.





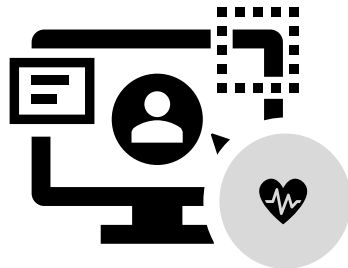
API Load Testing

- Testing 300 LEAs for consecutive loads threads**
Testing of LEA with 65k students
- Load scenario of all students for single resource
 - Load scenario of all students for all resources



DMC Level 2 Validations

- Testing concurrent requests by multiple LEAs**
Testing all collections available in Parallel environment
- PEIMS Fall: Tested 100 LEAs of various sizes
 - PEIMS Summer: Test planned for end of this month



Downstream Promotion & Validation

- Testing of 600+ LEAs:**
- PEIMS Fall, PEIMS Summer, Child Find, ECDS Kindergarten, and Class Roster Winter
 - Other collections to follow



Downstream Collection Reports

- Upcoming test of 200 Users (Campus/LEA):**
- PEIMS Fall: PDM-120-005, PDM1-111-002
 - PEIMS Summer: PDM3-130-008, PDM3-121-001
 - ECDS KG: All reports



DATA STANDARDS



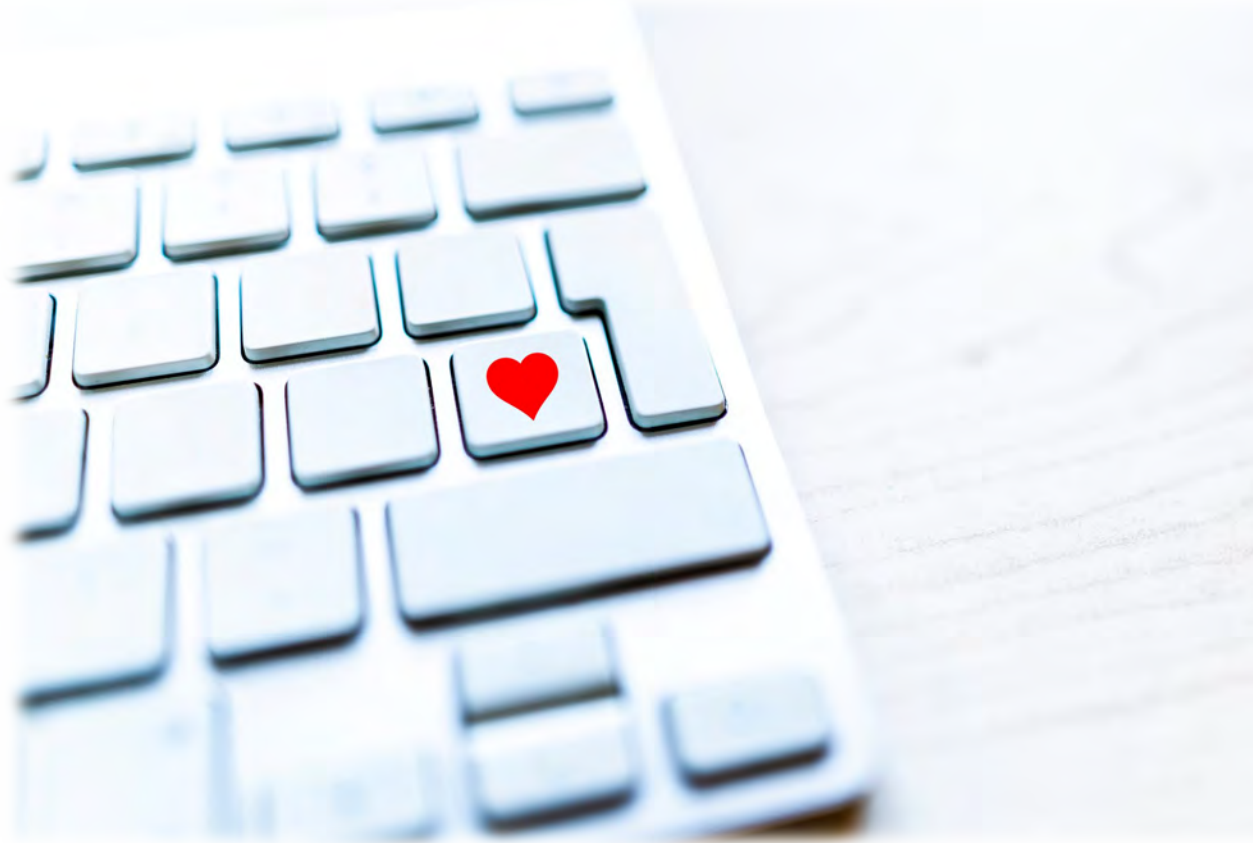
Jamie Muffoletto

Manager

Data Standards, Data Governance
and Data Quality Team



UPGRADE DATA STANDARDS

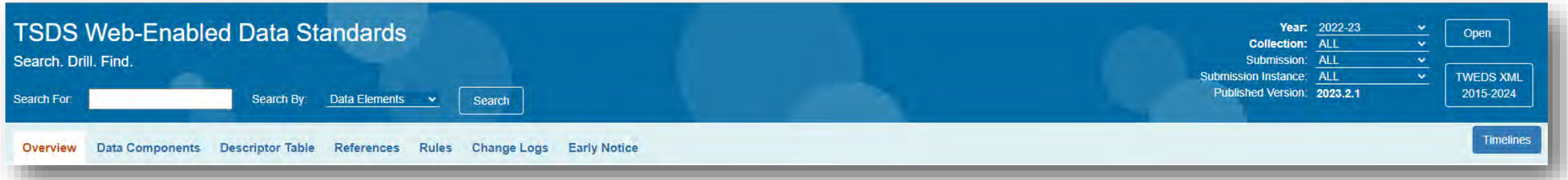


[Click Here For Website](#)

ODS Upgrade Guidance		Updated
Data Submission Requirements		02/12/2024
References		03/01/2024
ODS Upgrade Parallel Year		Released
2023-2024 ODS Upgrade Post-Addendum Data Standards		
(Version 2024.2.1 based on Ed-Fi 4.0 standards)		
Domains		04/12/2024
All Data Element Definitions		04/12/2024
Begin and End Date Data Element Definitions		07/01/2023
Descriptor Tables		02/29/2024
Data Validation Rules		12/14/2023
Change Log - Cumulative		04/12/2024
Change Log - Descriptor Tables		02/29/2024
Handbook		09/01/2023
ECDS Assessment Specifications		08/08/2023
Combined Document		04/12/2024



NEW TSDS WEB-ENABLED DATA STANDARDS



The screenshot shows the top navigation bar of the TSDS Web-Enabled Data Standards website. The title is "TSDS Web-Enabled Data Standards". Below the title is a search bar with the text "Search. Drill. Find." and a "Search" button. To the right of the search bar are several filters: "Year: 2022-23", "Collection: ALL", "Submission: ALL", "Submission Instance: ALL", and "Published Version: 2023.2.1". There are also buttons for "Open", "TWEDS XML 2015-2024", and "Timelines". Below the search bar is a horizontal menu with the following items: "Overview", "Data Components", "Descriptor Table", "References", "Rules", "Change Logs", and "Early Notice".

- The new TSDS Web-Enabled Data Standards (TWEDS) are under construction.
- The July 1, 2024, publication will be completed in new TWEDS.

NEW TWEDS



TSDS Web-Enabled Data Standards

Search. Drill. Find.

Search For: Search By: Data Elements

Year: 2022-23
 Collection: ALL
 Submission: ALL
 Submission Instance: ALL
 Published Version: 2023.2.1
 TWEDS XML 2015-2024

- Overview
- Data Components
- Descriptor Table
- References
- Rules
- Change Logs
- Early Notice

Timelines

Overview

2022-2023 TEDS

Collections

- Public Education Information Management System (PEIMS)
- Charter School Waitlist
- Child Find
- Class Roster
- Introduction to Early Childhood Data System (ECDS)
- Residential Facility Tracker
- Special Education Language Acquisition
- State Performance Plan Indicator 14

Timelines

- Public Education Information Management System (PEIMS)
- Charter School Waitlist
- Child Find
- Class Roster
- Early Childhood Data System
- Residential Facility Tracker
- Special Education Language Acquisition
- State Performance Plan Indicator 14 By Due Date

Data Submission Responsibilities

Submission and Resubmission Timelines

PEIMS Extended Year Submission (Sub 4) if applic	
PEIMS Extended Year Submission ready for users to promote data	March 27, 2023
TSDS PEIMS Extended Year ready for users to complete, approve, and accept submissions	July 31, 2023
Requests to retire Unique IDs due at TEA for PEIMS Extended Year First Submission	August 25, 2023
PEIMS Extended Year First Submission due date for LEAs	August 31, 2023
Requests to retire Unique IDs due at TEA for PEIMS Extended Year Resubmission	September 15, 2023
PEIMS Extended Year Resubmission due date for LEAs	September 21, 2023
PEIMS Extended Year data available to customers	October 19, 2023
PEIMS Fall Submission (Sub 1)	
TSDS PEIMS ready to load data to eDM	August 1, 2022
PEIMS Fall Submission ready for users to promote data	September 12, 2022
Close of school-start window - Last Friday in September	September 30, 2022
PEIMS Fall snapshot date	October 28, 2022
TSDS PEIMS Fall ready for users to complete, approve, and accept submissions	October 31, 2022
Requests to retire Unique IDs due at TEA for PEIMS Fall First Submission	December 2, 2022
PEIMS Fall First Submission due date for LEAs and ESCs	December 8, 2022
Requests to retire Unique IDs due at TEA for PEIMS Fall Resubmission	January 13, 2023
PEIMS Fall Resubmission due date for LEAs and ESCs	January 19, 2023
PEIMS Fall data available to customers	February 16, 2023



NEW TWEDS



TSDS Web-Enabled Data Standards

Search. Drill. Find.

Search For: Search By: Data Elements

Year: 2022-23
 Collection: ALL
 Submission: ALL
 Submission Instance: ALL
 Published Version: 2023.2.1

Overview **Data Components** Descriptor Table Refe

Data Components
2022-2023 TEDS

Categories

StudentEducationOrganizationAssociation Entity

Data Element	NP*	Core	PEIMS	Length	Data Type	Descriptor Table	Element ID
Student	-	-	-	-	-	-	-
Sex			PS		Descriptor	C013	E0004
Race			PS		Descriptor	C304	E3050
HispanicLatinoEthnicity			PS		Boolean		E1064
StudentAcceleratedEducationPlan			PS		Boolean		E3083
AcceleratedInstructionSet <i>(may have multiple instances)</i>							
AcceleratedInstructionSubject			PS		Descriptor		E3084
StudentAcceleratedInstructionParticipation			PS		Descriptor	C353	E3085
AssignedHoursAcceleratedInstruction			PS	4	Decimal		E3086
CompletedHoursAcceleratedInstruction			PS	4	Decimal		E3087
DifferenceReasonHoursAcceleratedInstruction			PS		Descriptor	C354	E3088

- Data Components
 - Entities
 - Data Elements



NEW TWEDS



TSDS Web-Enabled Data Standards
 Search. Drill. Find.

Search For: Search By: Data Elements Search

[Overview](#) [Data Components](#) [Descriptor Table](#) [References](#) [Rules](#) [Change Logs](#)

Data Components
 2022-2023 TEDS

- Entities
- Data Elements

Student Entity

Data Element	NP*	Core	PEIMS	Length	Data Type	Descriptor Table	Element ID
StudentUniqueId		✓	PS,PE,PF	10	String		E1523
LocalStudentId		✓	PS,PE,PF	9	String		E0923
StudentId		✓	PS,PE,PF	9	String		E0001
GenerationCode		✓	PS,PE,PF		Descriptor	C012	E0706
AsOfStatusLastFridayOctober					Descriptor	C324	E3007
AsOfStatusLastDayEnrollment					Descriptor	C323	E3006
StudentDoNotReportTSDS					Boolean		E3009
NonEnrolledStudentUILActivity					Descriptor	C234	E1739
StudentCensusBlockGroupSet (may have multiple instances)							
StudentCensusBlockGroup			PS,PF	12	String		E1648
BeginDate			PS,PE,PF	10	Date		E3010
EndDate			PS,PE,PF	10	Date		E3020
CrisisEventSet (may have multiple instances)							
CrisisEvent			PS,PE,PF		Descriptor	C178	E1054
BeginDate			PS,PE,PF	10	Date		E3010
EndDate			PS,PE,PF	10	Date		E3020
Name							
FirstName		✓	PS,PE,PF	75	String		E0703
MiddleName		✓	PS,PE,PF	75	String		E0704
LastSurname		✓	PS,PE,PF	75	String		E0705

Collected in Core Missions:

- SPPI-14 - SPPI-14
- RFT - RFT
- CSW - Charter School Waitlist
- ECDS - ECDS-KG
- ECDS - ECDS-PK
- CF - Child Find
- CR - CRW

- Data Components
 - Entities
 - Data Elements



NEW TWEDS



TSDS Web-Enabled Data Standards
Search. Drill. Find.

Search For: Search By: **Data Elements**

Year: 2022-23
Collection: ALL
Submission: ALL
Submission Instance: ALL
Published Version: 2023.2.1

Overview **Data Components** Descriptor Table

Data Components
2022-2023 TEDS

Categories

Legend

PEIMS:
PF-Fall Submission
PM-Mid-Year Submission
PS-Summer Submission
PE-Extended Submission

* NP = "Not Promoted"
link icon hyperlinks to the entity for a cross-referenced item
NOTE: For specifics on which Core collections a data is used in, click the hyperlinked data element name or hover over the checkmark icon

Entity Description

Student Education Organization Association

General Reporting Requirements

Special Reporting Requirements

Data Element Reporting Requirements

Examples

- Data Components

- Entities

- Data Elements



NEW TWEDS



TSDS Web-Enabled Data Standards
 Search. Drill. Find.

Search For: Search By: **Data Elements**

Year: 2022-23
 Collection: ALL
 Submission: ALL
 Submission Instance: ALL
 Published Version: 2023.2.1

TWEDS XML
2015-2024

Overview **Data Components** Descriptor Table References Rules Change Logs Early Notice

Data Components
2022-2023 TEDS

- Entities
- Data Elements

Data Element ID	Data Element Name	Date Issued	Date Updated
E0706	GenerationCode	12/01/2021	
Definition			
GenerationCode identifies the generation suffix, if any, which the person attaches to his name (e.g., Jr., Sr., III).			
Special Instructions			
Table Identification	Length	Data Type	Domain of Values
GenerationCode(C012)		Descriptor	
Used in Entities			
Student			
Used in Domain			
Former Data Element Name			
Used in Data Collections/Submissions			
<input checked="" type="checkbox"/> PEIMS EXYR	<input type="checkbox"/> CR CRF		
<input checked="" type="checkbox"/> PEIMS FALL	<input checked="" type="checkbox"/> CR CRW		
<input type="checkbox"/> PEIMS MDYR	<input checked="" type="checkbox"/> CSW Charter School		
<input checked="" type="checkbox"/> PEIMS SUMR	Waitlist		
<input checked="" type="checkbox"/> CF Child Find	<input checked="" type="checkbox"/> ECDS ECDS-KG		
	<input checked="" type="checkbox"/> ECDS ECDS-PK		

- Data Components
 - Entities
 - Data Elements



NEW TWEDS



TSDS Web-Enabled Data Standards

Search. Drill. Find.

Search For: Search By: **Data Elements**

Year: 2022-23
Collection: ALL
Submission: ALL
Submission Instance: ALL
Published Version: 2023.2.1

Overview Data Components **Descriptor Table** References Rules Change Logs Early Notice

Descriptor Table
2022-2023 TEDS

Description of Descriptor Tables
▶ List of Descriptors

Table Identification	Name	Date Issued	Date Updated
C012	GenerationCode	03/01/2013	01/12/2023

Descriptor	Short Description	Long Description
1	Jr	Jr
2	Sr	Sr
3	II	II
4	III	III
5	IV	IV
6	V	V
7	VI	VI
8	VII	VII
9	VIII	VIII
A	I	I
B	IX	IX
C	X	X

Used in the following data element(s):
GenerationCode

Used in the following entities:
Student

- Descriptor Table
 - List of Descriptors



NEW TWEDS



TSDS Web-Enabled Data Standards

Search. Drill. Find.

Search For: Search By: Data Elements

Year: 2022-23
 Collection: ALL
 Submission: ALL
 Submission Instance: ALL
 Published Version: 2023.2.1
 TWEDS XML 2015-2024

- Overview
- Data Components
- Descriptor Table
- References
- Rules**
- Change Logs
- Early Notice

Timelines

Rules

2022-2023 TEDS

Business Context Rules

Level 1.5 Rules

Level 2 Rules

- Level 2 Rules by Severity
- Level 2 Rules by Category/Subcategory

Level 3 Rules

- Level 3 Rules by Severity
- Level 3 Rules by Category/Subcategory

Rule #	Rule Text / Business Meaning	Sev./ Level	Core	PEIMS	Applies To
10020-000F	For a Campus/School being reported for PEIMS Submission 4 (Extended Year) the following must be provided: LocalEducationAgency (LocalEducationAgencyId, LocalEducationAgencyCategory), and ExpandedLearningOpportunity.	F		PE	Campus, Charter, LEA
	For a Campus/School being reported for PEIMS Submission 4 (Extended Year) the following must be provided: LocalEducationAgency (LocalEducationAgencyId, LocalEducationAgencyCategory), and ExpandedLearningOpportunity.	L2, L3			
10020-0010	SchoolId must match an entry registered with TEA as an active instructional or under construction campus.	F		PF	Campus, Charter, LEA
	For a Campus, the SchoolId must be a valid campus registered with the TEA as an active instructional or under construction campus.	L2, L3			
10020-0011	SchoolId must match an entry registered with TEA as active instructional or under construction in the prior school year.	F		PM	Campus, Charter, LEA
	For a Campus, the SchoolId must be a valid campus registered with the TEA as active instructional or under construction in the prior school year.	L2, L3			
10020-0012	SchoolId must match an entry registered with TEA as an active instructional campus.	F	✓	PS, PE	Campus, Charter, LEA
	For a Campus, the SchoolId must be a valid campus registered with the TEA as an active instructional campus.	L2, L3			
10020-0013	For each campus registered with TEA as an active instructional campus, except JJAEPs, there should be StaffEducationOrganizationAssignmentAssociation or StaffSectionAssociation data for each staff assignment.	S		PF	Charter, LEA
	Staff assignment data should be reported for each professional and paraprofessional staff person for each active instructional campus (except JJAEPs).	L2, L3			
10020-0014	For each campus registered with TEA as an active instructional campus, there should be student data for each student served by the Local Education Agency.	S	✓	PF, PS	Charter, LEA
	Student data should be reported for each student for each active instructional campus.	L2, L3			



NEW TWEDS



TSDS Web-Enabled Data Standards

Search. Drill. Find.

Search For: Search By: Data Elements

Year: 2022-23
 Collection: ALL
 Submission: ALL
 Submission Instance: ALL
 Published Version: 2023.2.1
 TWEDS XML 2015-2024

- Overview
- Data Components
- Descriptor Table
- References
- Rules**
- Change Logs
- Early Notice

Timelines

Rules

2022-2023 TEDS

Business Context Rules

Level 1.5 Rules

Level 2 Rules

- Level 2 Rules by Severity
- Level 2 Rules by Category/Subcategory

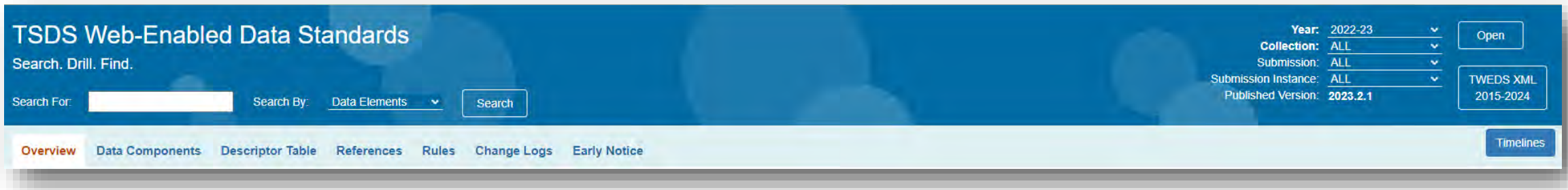
Level 3 Rules

- Level 3 Rules by Severity
- Level 3 Rules by Category/Subcategory

Rule #	Rule Text / Business Meaning	Sev./ Level	Core	PEIMS	Applies To
10020-000F	For a Campus/School being reported for PEIMS Submission 4 (Extended Year) the following must be provided: LocalEducationAgency (LocalEducationAgencyId, LocalEducationAgencyCategory), and ExpandedLearningOpportunity.	F		PE	Campus, Charter, LEA
	For a Campus/School being reported for PEIMS Submission 4 (Extended Year) the following must be provided: LocalEducationAgency (LocalEducationAgencyId, LocalEducationAgencyCategory), and ExpandedLearningOpportunity.	L2, L3			
10020-0010	SchoolId must match an entry registered with TEA as an active instructional or under construction campus.	F		PF	Campus, Charter, LEA
	For a Campus, the SchoolId must be a valid campus registered with the TEA as an active instructional or under construction campus.	L2, L3			
10020-0011	SchoolId must match an entry registered with TEA as active instructional or under construction in the prior school year.	F		PM	Campus, Charter, LEA
	For a Campus, the SchoolId must be a valid campus registered with the TEA as active instructional or under construction in the prior school year.	L2, L3			
10020-0012	SchoolId must match an entry registered with TEA as an active instructional campus.	F	✓	PS, PE	Campus, Charter, LEA
	For a Campus, the SchoolId must be a valid campus registered with the TEA as an active instructional campus.	10020-0012 Core Submissions:			
10020-0013	For each campus registered with TEA as an active instructional campus, except JJAEPs, there should be StaffEducationOrganizationAssignmentAssociation or StaffSectionAssociation data for each staff assignment.			PF	Charter, LEA
	Staff assignment data should be reported for each professional and paraprofessional staff person for each active instructional campus (except JJAEPs).				
10020-0014	For each campus registered with TEA as an active instructional campus, there should be student data for each student served by the Local Education Agency.	S	✓	PF, PS	Charter, LEA
	Student data should be reported for each student for each active instructional campus.	L2, L3			



NEW TWEDS



- **References:** replaces the *Technical Resources* available in the current TWEDS.
- **Change Logs:** link to documents showing the cumulative changes.
- **Early Notice:** available when TEA has a notice for future data collections.





TRAINING



David Butler
Manager
Customer Engagement Team



CUSTOMER ENGAGEMENT TEAM



Provides training and guidance to ESCs and vendors through the Field Coordination Network (FCN).



Solicits field guidance through various advisory groups consisting of LEAs and ESCs.



Certifies TSDS Champions to effectively train and support their LEAs in all areas of TSDS.



Develops resources to allow self-sufficiency for LEAs and ESCs to accomplish key functions.



TSDS UPGRADE PROJECT TRAINING

Go-Live Year Preparation

TSDS Upgrade Story

Overview and
Key Concepts

TEDS 4.x Overview

TEAL Updates

Security Management
for DMC

Level 1.5 Filters

Descriptor Mapping

Level 2 Validations

Comparing Current year
result to past years'

COURSE AGENDA

GETTING STARTED

Key Terms and Apply for DMC LEA Data Monitor Role

KEY CONCEPTS

Level 1.5 Filters

Training Activity

Demo, Practice, Troubleshooting, Knowledge Checks

WRAP-UP

Key Takeaways, Resources, and Next Steps



POLL QUESTION #1



Which of the following TSDS Upgrade Project component areas have you received training on from your ESC?

- TSDS Upgrade Story**
- Overview and Key Concepts**
- TEDS 4.x Overview**
- TEAL Updates**
- Security Management for DMC**
- Level 1.5 Filters**
- Descriptor Mapping**
- Level 2 Validations**

TSDS TRAINING ADVISORY GROUP (TTAG)

Purpose

- Gather input on best practices for developing training materials for the LEAs and ESCs to ensure the content and design are relevant, effective, and usable by ESCs and LEAs.

Who We Are

- 13 LEA volunteers
- 5 ESC volunteers

TTAG Outcomes

- **Improved content and design** of existing and new TSDS training materials merging industry best practices with TTAG recommendations.
- **Enhanced** existing and new materials by adding **problem solving** scenarios to build troubleshooting **skills**.
- **Developed new resources** such as **Reference Guides** to meet LEA's needs.

TSDS DEPLOYMENT ADVISORY GROUP (TDAG)

Purpose

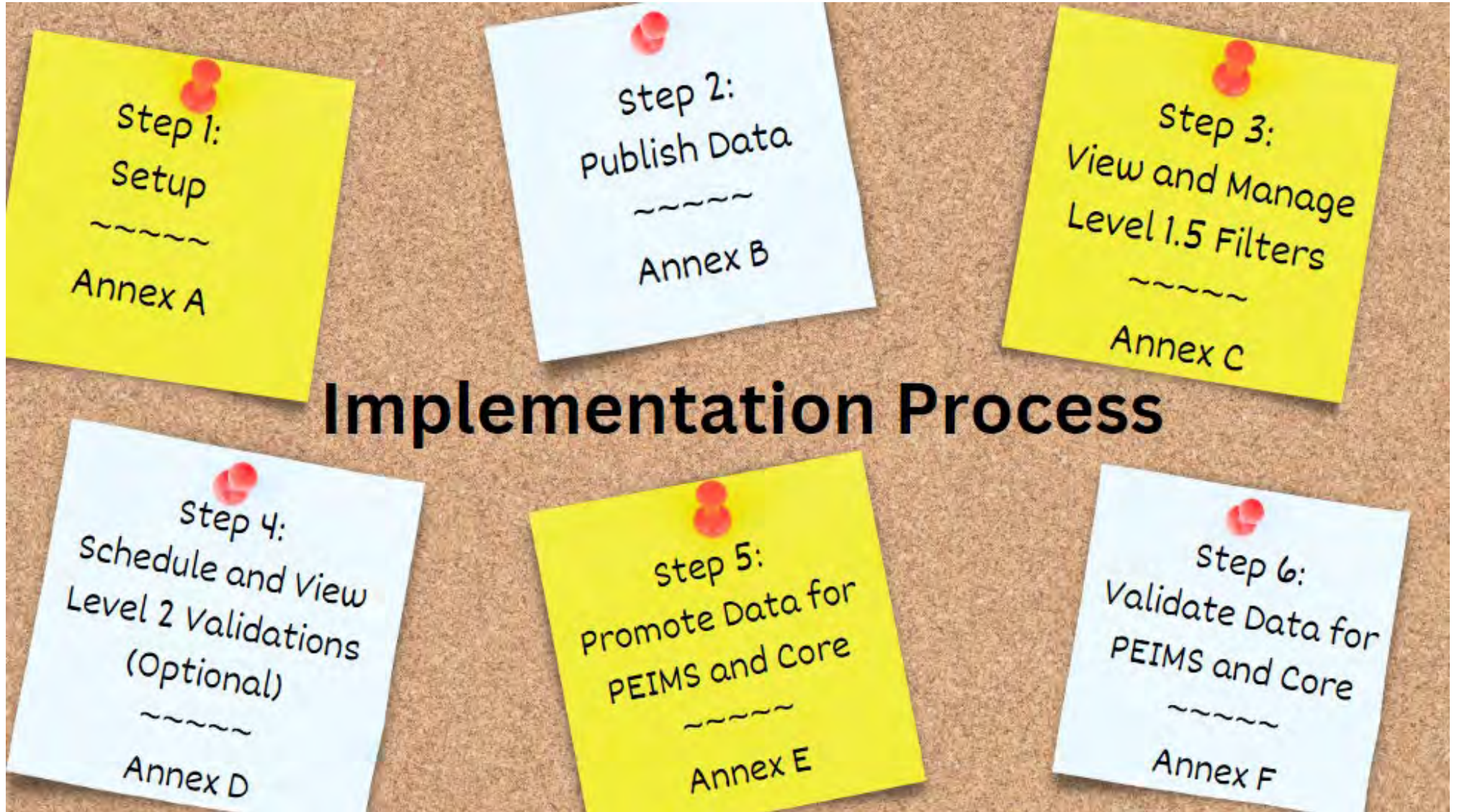
- Develop an Implementation Guide and Problem Resolution Guide for the TSDS Upgrade Project for LEAs and ESCs, to help users successfully submit their TSDS data.

Who We Are

- 59 LEA volunteers from 50 LEAs
- 10 ESC volunteers from 10 ESCs

Where We Are

- Developed a 'Happy Path' that includes steps and tasks for a seamless implementation process for the TSDS Upgrade Project.
- Developed a Problem Resolution Guide that includes action steps to help users who experience challenges with their submissions.



Implementation Process



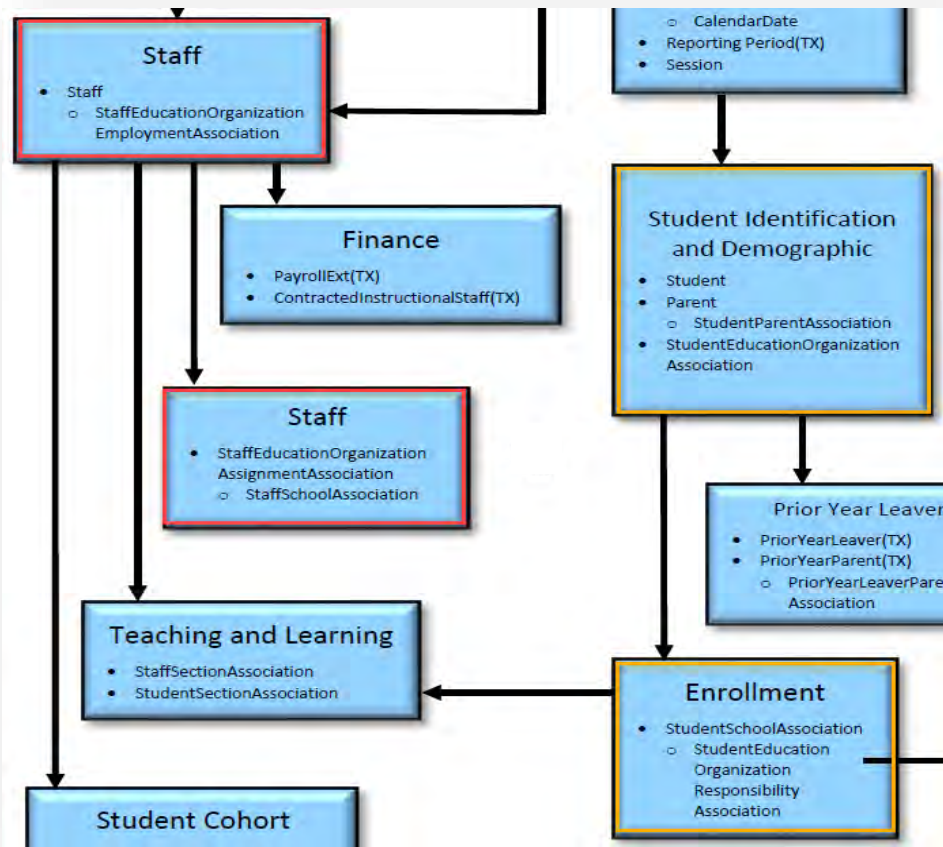
SUPPORT



Laura Rissas
Support Lead
Customer Support Team



DOMAIN DEPENDENCY: KEY CONCEPTS



Many resources in the IODS are authorized by their relationship to the education organization.

For example, access to student and student-related data is restricted by the **StudentSchoolAssociation**.

The same is true for staff members and their relationships provided by the following:

- StaffEducationOrganizationEmploymentAssociation (SEOEA).
- StaffEducationOrganizationAssignmentAssociation (SEOAA).



[Click Here For Domain Dependency](#)

DOMAIN DEPENDENCY: 403 FORBIDDEN



- If the relationship has not been established with your district/school, you may see a **403 Forbidden Authorization denied** error when trying to update or insert a Student or Staff entity record.
- Be sure an appropriate StudentSchoolAssociation or SEOEA/SEOAA record is published *after* publishing the corresponding Student or Staff record.
- Utilize the TSDS Domain Dependency documentation for proper load order.

403 FORBIDDEN Authorization denied.

No relationships have been established between the caller's education organization id claims (XXXXXX) and the resource item's 'StudentUniqueld' value.

403 FORBIDDEN Authorization denied.

No relationships have been established between the caller's education organization id claims (XXXXXX) and the resource item's 'StaffUniqueld' value.

DOMAIN DEPENDENCY: 409 CONFLICT



409 CONFLICT

Access to the resource item could not be authorized because the 'Student' was not found.

409 CONFLICT

Access to the resource item could not be authorized because the 'Staff' was not found.

- Be sure an appropriate Student or Staff record is published *before* publishing the corresponding StudentSchoolAssociation or SEOEA/SEOAA .
- Utilize the TSDS Domain Dependency documentation for proper load order.


WHERE TO GET HELP AND SUPPORT



First, check your SIS/HR/Finance to make sure all relevant information is entered and is being published for student and staff Unique IDs.

Next, reference any Level 1 (API) error documentation provided by your SIS/HR/Finance vendor or submit a support request with them.

Lastly, contact your ESC TSDS Champion or submit in a TIMS ticket for additional TSDS support.

- The TEA TSDS support team does not have access or transparency into Level 1 (API) errors. TEA may offer assistance and guidance on identifying what may be causing the error, such as incomplete data or load dependencies.
- When submitting a TIMS support ticket, please attach a copy of the most current Level 1 error(s) and indicate any Unique IDs when applicable.
- Refer to the following resources:
 -  [Ed-Fi Resource Dependency Order](#)
 - [Ed-Fi API Error Responses](#)



AUDIENCE RESPONSE

What resources do you utilize to identify and resolve Level 1 (API) validation errors?



DATA VERIFICATION



Connor Briggs

Project Lead

Product Owner Team

DMC LOAD SUMMARY REPORT



LEA / ESC Reports:

- An **LEA** can see a total count of domains loaded and is able to drill-down into each domain to see the record count by entity.
- An **ESC** view is similar but allows additional capability to view LEAs with no data loaded vs those that have data loaded.
- An **enhancement** is being considered to add a “last updated” **date/timestamp** to each record count.

LEARNING TEST ISD (701603) 2023-2024 GO

TEA Texas Education Agency Data Management Center

Monitor Validations Admin View Reports

Home >> Load Summary

View LEA Reports

Load Summary

Domains Loaded for 2023-2024		17
<input type="radio"/>	Alternative and Supplemental Services	
<input type="radio"/>	Assessment	
<input type="radio"/>	Discipline	
<input type="radio"/>	Education Organization	
<input type="radio"/>	Enrollment	
	Entity	Records
	StudentEducationOrganizationResponsibilityAssociation	157
	StudentSchoolAssociation	157
<input type="radio"/>	Finance	
<input type="radio"/>	Prior Year Leaver	
<input type="radio"/>	Restraint Event	
<input type="radio"/>	School Calendar	
<input type="radio"/>	Staff	
<input type="radio"/>	Student Academic Record	
<input type="radio"/>	Student Application	



DMC SEARCH DATA (UPCOMING)



Data Management Center

Monitor Validations Search Data View Reports Admin System Admin

Home » Search Landing Zone

Search Landing Zone

Search for an entity and apply filters to narrow your search:

Hide Filters

Entities that are not available in the Search field do not contain any data in your IODS

StudentUniqueld

1121335373 X 1121337643 X 1121352219 X 1121956491 X



Data Management Center

Monitor Validations Search Data View Reports Admin System Admin

Home » Search Landing Zone

Search Landing Zone

Search for an entity and apply filters to narrow your search:

Filters

Entities that are not available in the Search field do not contain any data in your IODS

Show 50 entries

Search Table:

Export

StudentUniqueld	StudentAssmtIdentifier	AssmtIdentifier	Namespace	JSON
1121335373	StudAssmt_1	assmt_1	uri://local.texas.gov	View
1121337643	StudAssmt_2	assmt_2	uri://local.texas.gov	View
1121352219	StudAssmt_3	assmt_3	uri://local.texas.gov	View
1121956491	StudAssmt_4	assmt_4	uri://local.texas.gov	View

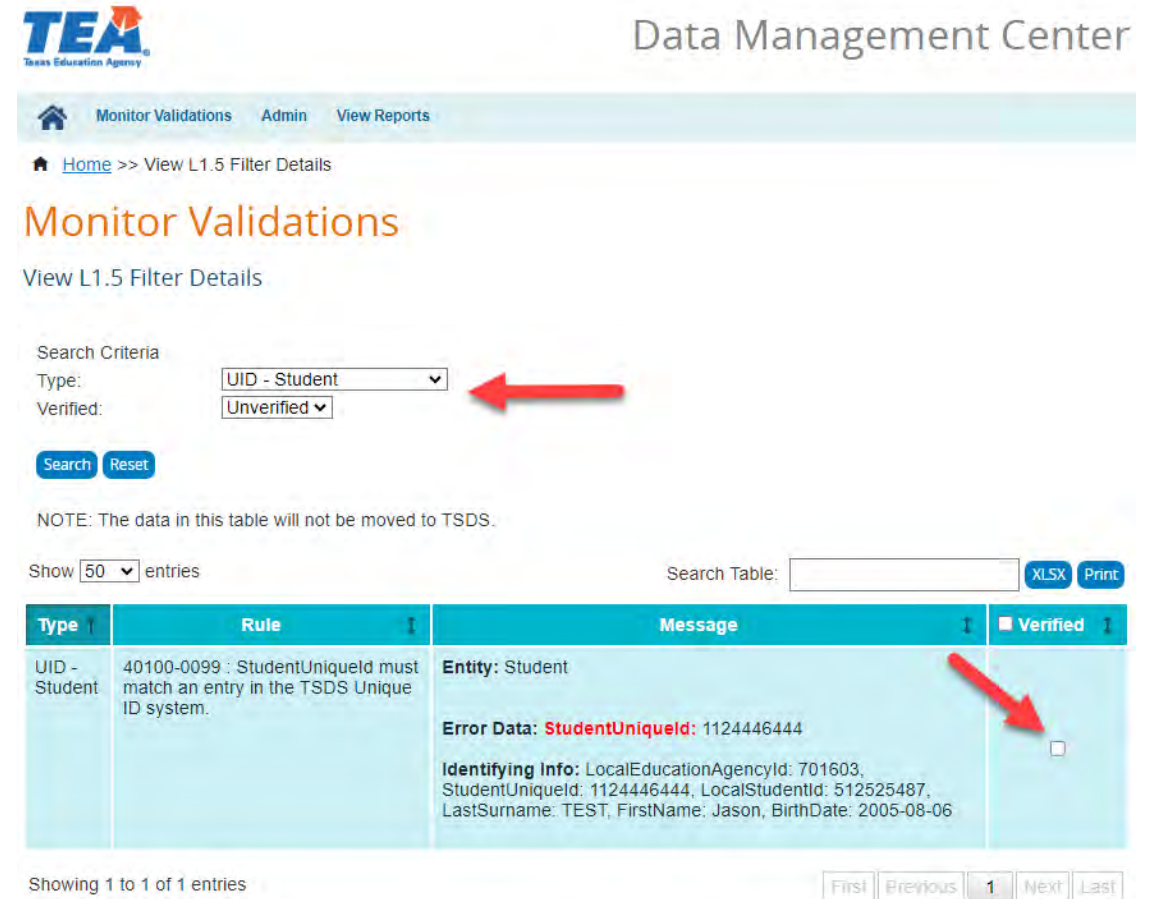
Showing 1 to 4 of 4 entries

First Previous Next Last



LEVEL 1.5 FILTERS

- Filter checks that occur on data in the Landing Zone IODS that **prevent data** from being loaded to **TSDS**.
 - There are **6** different types of Level 1.5 filters.
 - Not all filters may need to be “corrected”.
 - Data not intended for TSDS can be marked as **‘Verified’**.



TEA
Texas Education Agency

Data Management Center

Monitor Validations Admin View Reports

Home >> View L1.5 Filter Details

Monitor Validations

View L1.5 Filter Details

Search Criteria
 Type: UID - Student
 Verified: Unverified

Search Reset

NOTE: The data in this table will not be moved to TSDS.

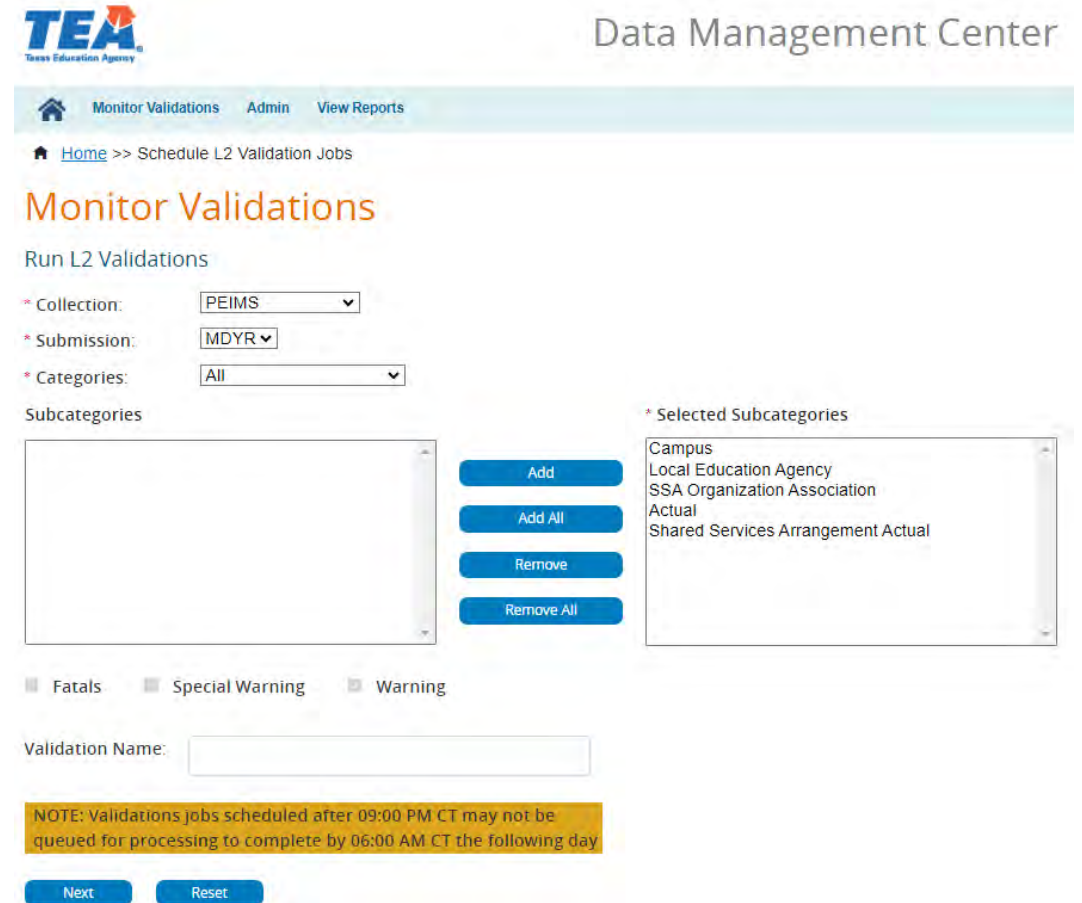
Show 50 entries Search Table: XLSX Print

Type ↑	Rule ↓	Message ↑	Verified ↑
UID - Student	40100-0099 : StudentUniqueid must match an entry in the TSDS Unique ID system.	Entity: Student Error Data: StudentUniqueid: 1124446444 Identifying Info: LocalEducationAgencyId: 701603, StudentUniqueid: 1124446444, LocalStudentId: 512525487, LastSurname: TEST, FirstName: Jason, BirthDate: 2005-08-06	<input type="checkbox"/>

Showing 1 to 1 of 1 entries First Previous 1 Next Last

LEVEL 2 VALIDATIONS

- Business rule validation checks run against data in the Landing Zone IODS **prior to promoting** data to PEIMS or Core.
 - Strongly encouraged to allow validation of data **earlier** the in the submission process.
 - Fatafs, Special Warnings, and Warnings **do not** prevent the data from being loaded to TSDS.



The screenshot shows the TEA Data Management Center interface for scheduling L2 validation jobs. The page title is "Monitor Validations" and the breadcrumb is "Home >> Schedule L2 Validation Jobs". The "Run L2 Validations" section includes dropdown menus for "Collection" (PEIMS), "Submission" (MDYR), and "Categories" (All). Below these are two lists of subcategories: "Subcategories" (empty) and "Selected Subcategories" (Campus, Local Education Agency, SSA Organization Association, Actual, Shared Services Arrangement Actual). There are buttons for "Add", "Add All", "Remove", and "Remove All" between the lists. At the bottom, there are checkboxes for "Fatafs", "Special Warning", and "Warning", a "Validation Name" input field, a yellow note about scheduling times, and "Next" and "Reset" buttons.

DMC RECURRING LEVEL 2 (UPCOMING)



LEARNING TEST (SD 701603) 2023-2024 GO

TEA Texas Education Agency

Data Management Center

Monitor Validations Admin

Home >> Schedule L2 Validation Jobs

Monitor Validations

Run L2 Validations

* Collection: PEIMS
* Submission: MDYR
* Categories: All

Subcategories

Campus
SSA Organization Association

Add
Add All
Remove
Remove All

* Selected Subcategories
Actual
Local Education Agency
Shared Services Arrangement Actual

Fatal Error Special Warning Warning

Validation Name:

Run Tonight/Next Processing Window
 Schedule Future Instance
 Schedule Recurring

* Recurrence Name: Mon, Fri PEIMS Mdyr

* Recurrence Pattern

Select day(s) of the week to run:

Sunday Monday Tuesday Wednesday
 Thursday Friday Saturday

* Recurrence Range

Start: 09/15/2023 End: 04/10/2024

NOTE: Validations jobs scheduled after 09:45 AM CT may not be queued for processing to complete by 06:10 PM CT the following day

Next Reset



PROMOTION & LEVEL 2 SCHEDULE



TSDS Data Collections	Parallel Promotions & Level 2 Validations *	Collection Due Date in Production (XML)
Charter School Waitlist	September 8, 2023	October 27, 2023
Class Roster Fall	October 6, 2023	October 19, 2023
PEIMS Fall	November 10, 2023	December 7, 2023
PEIMS Mid-Year	November 30, 2023	January 25, 2024
ECDS Kindergarten	December 13, 2023	January 25, 2024
SPPI-14	February 9, 2024	February 15, 2024
Class Roster Winter	March 8, 2024	March 28, 2024
SELA	March 15, 2024	June 20, 2024
PEIMS Summer	April 22, 2024	June 27, 2024
RF Tracker	April 22, 2024	July 18, 2024
ECDS Prekindergarten	May 6, 2024	June 27, 2024
Child Find	June 3, 2024	July 25, 2024
PEIMS Extended Year	June 17, 2024	August 29, 2024



*Dates Subject to Change

SUBMISSION BASED RESOURCES



Data Collection Documentation

Explore the library of Data Collection Documentation that provides promotion logic and test cases for all the different TSDS data collections.

On This Page:

- [Charter School Waitlist](#)
- [Class Roster](#)
- [Early Childhood Data System \(ECDS\)](#)
- [Public Education Information Management System \(PEIMS\)](#)
- [State Performance Plan Indicator 14 \(SPPI-14\)](#)



[Click Here For Website](#)

UPCOMING NEW RESOURCES

Data Collection	Target Date
SELA	April 26, 2024
PEIMS Summer	April 26, 2024
RF Tracker	May 3, 2024
ECDS PK	May 10, 2024
Child Find	June 7, 2024
PEIMS Ext Year	June 21, 2024





NEXT STEPS

NEXT STEPS FOR PARALLEL SUBMISSION

1

Integration

Immediately

LEAs should ensure their setup has been completed with their source system vendor(s) and data is frequently flowing to the IODS.

2

Data Out

Now through May

LEAs should identify/resolve Level 1 (API) errors and Level 1.5 filter results to ensure data completeness in the IODS.

3

End-to-End

Now through July

LEAs should coordinate with their vendor(s) and ESC to implement an effective plan to complete testing to ensure data accuracy.

4

Ensure Readiness

Now through August

LEAs should utilize TEA resources, vendor scorecard(s), and ESC training to ensure readiness for the start of 2024-2025.

LOOKING AHEAD TO WHAT IS NEXT



- TSDS Website Updates
- Additional Resources
- Vendor Product Scorecard

-
- TSDS Champion Training
 - TEAL Roles Guidance
 - New DMC Functionality
 - 2024-2025 Go-Live

REMINDERS: ATTENDANCE & ENROLLMENT

Attendance

TEA plans to collect attendance data two ways in the 2024-2025 school year:

1. Granular negative attendance by student which will eliminate the requirement for SIS vendors to **calculate attendance by six-weeks**.
2. **Cumulative attendance** by six-weeks by student. (no change from the way attendance is currently collected)

Note: TEA will eventually discontinue collecting cumulative attendance in a future school year after confirming attendance calculations.

Enrollment

TEA has **postponed** the requirement to submit **enrollment** and **withdrawal** data for the purpose of the Enrollment Tracking collection.

For the 2024-2025 school year, an LEA will continue to submit enrollment and withdrawal student data through the **existing batch file process** and load them directly into the Unique ID application.



QUESTIONS



THANK YOU!

FAQ RESOURCES



FREQUENTLY ASKED QUESTIONS



What should an LEA do if they have not been onboarded yet?

An LEA should contact their vendor and/or ESC to determine what may be preventing their ability to send data to the IODS. Please ensure the following:

1. The LEA is on the list of participating [Parallel LEAs](#).
2. The LEA has generated and provided the Key & Secret credentials to their vendor(s).
3. The LEA has completed any necessary setup in the vendor product.
4. The LEA has the appropriate access to the Parallel environment to confirm data is being loaded.

TEA continues to support any vendor that has not yet onboarded all their participating LEAs. Depending on the severity of the roadblock, an LEA may decide to withdraw from the Parallel Submission and focus on their readiness for the 2024-2025 Go-Live year.



FREQUENTLY ASKED QUESTIONS



How often will my vendor send data to the IODS?

This will depend on each vendor product. TEA's expectation is to have data available at near-real time and as changes are made in the source system. However, the timing and approach of sending data to the IODS will be based upon the vendor implementation.

An LEA should contact their specific vendor for training and guidance on the API sync process and/or service level agreements (SLAs) for issue resolution to ensure data is updated in an appropriate timeframe and manner to satisfy TSDS data submission requirements.

FREQUENTLY ASKED QUESTIONS



How often is data sent from the IODS to TEA for TSDS data promotion?

On average, TEA expects data to be available for TSDS data promotion within ten minutes of being successfully loaded to the IODS. This may change upon performing additional load tests and continued monitoring of the Parallel Submission, as more and more data is loaded from participating LEAs.

Every two minutes, the system will identify and extract any changes (inserts, deletes, updates) from the API. The changes are then moved to TEA and the appropriate processes are run to make the data available for promotion to the PEIMS and CORE applications.

FREQUENTLY ASKED QUESTIONS



Does an LEA need to resolve all Level 1, Level 1.5, and Level 2 validation errors prior to proceeding to End-to-End testing?

No. An LEA can proceed with testing their TSDS data submissions once enough data has been loaded to the IODS.

As a reminder, Level 1.5 filter results will prevent data from being loaded to TEA for data promotion. However, Level 2 validations will not prevent data from being loaded to TEA and will be run again during the Level 3 validations in the PEIMS and CORE applications.

An LEA is encouraged to utilize the Level 2 validations to identify data validation errors earlier in the submission process.

FREQUENTLY ASKED QUESTIONS



How will deletes work in the absence of a Delete Utility?

The vendor product will provide a record-based delete via the API. Ed-Fi does not allow for bulk deletion or provide a way to delete entire Entities. Once the delete operation is sent to the IODS, the 'change' is identified by the system and the downstream data is updated for TSDS data promotions.

If it is determined that the entire IODS needs to be deleted, the LEA can submit a TIMS support ticket and TEA will perform the necessary action upon approving the request. The corresponding downstream data will also be cleared with that request. An LEA should treat this option as a last resort and additional coordination with their vendor(s) may be required.

FREQUENTLY ASKED QUESTIONS



What is the expectation at the start of the school year when all LEAs are sending their initial data? Are there any concerns?

TEA is expecting peak processing and heavy usage at the beginning of the school year, as LEAs across the state send their initial data to the IODS. It will be vitally important for LEAs to manage, monitor, and resolve Level 1 (API) errors in a timely manner as the processing of errors does have an impact on system performance.

FREQUENTLY ASKED QUESTIONS



Is it recommended for an LEA to load their data to the IODS outside of school business hours (after-hours)?

TEA would encourage an LEA and their vendor to minimize the use of ‘batch’ processing of data during after-hours, whenever possible. The preference would be for an LEA and their vendor to continuously send data throughout the day, as appropriate.

As TEA continues to monitor and analyze the Parallel Submission, additional guidance and best practices will be provided to LEAs and vendors.

FREQUENTLY ASKED QUESTIONS



What should an LEA do if they are unable to test and compare their API transactions in the 2023-2024 Parallel Submission before the TSDS data submission due date stated in TEDS?

An LEA can retroactively test any TSDS data submission, even after the submission (XML) due date stated in TEDS. TEA will not close any of the TSDS data submissions in the 2023-2024 Parallel Environment as they do now with the XML-based system.

Whenever possible, TEA encourages participating LEAs to plan and coordinate their testing efforts with the submission of their XML data to ensure the best possible test results and outcome.

FREQUENTLY ASKED QUESTIONS



How will LEAs not participating in the Parallel Submission know if their vendor is ready for the 2024-2025 Go-Live year?

TEA is requiring all TSDS vendors to obtain a TSDS Compatible Designation prior to the start of the 2024-2025 Go-Live year. This designation will ensure a vendor's product is able to successfully load all required and optional data needed for TSDS data reporting purposes.

Additionally, this designation will require the signoff of selected LEAs on the data accuracy of each TSDS data submission. TEA will publish the status of each vendor's product(s) TSDS Compatible Designation on the TSDS website.

FREQUENTLY ASKED QUESTIONS



What is the backup plan if an LEA is unable to submit their data to TSDS via API transactions in the 2024-2025 school year?

The driving factor of the TSDS Upgrade Project is to upgrade to a current version of Ed-Fi data standards and the technology. As a result of this project, TEA will no longer be able to accept XML files for TSDS data reporting starting in the 2024-2025 school year. All data required for TSDS state reporting will need to be submitted via API transactions.

TEA, in partnership with the Ed-Fi Alliance, have been committed to supporting TSDS vendors throughout the 2022-2023 Pilot Program and 2023-2024 Parallel Submission to ensure their readiness. LEAs are encouraged to coordinate with their vendor(s) on support expectations to ensure the timely submission of their TSDS state reporting.

